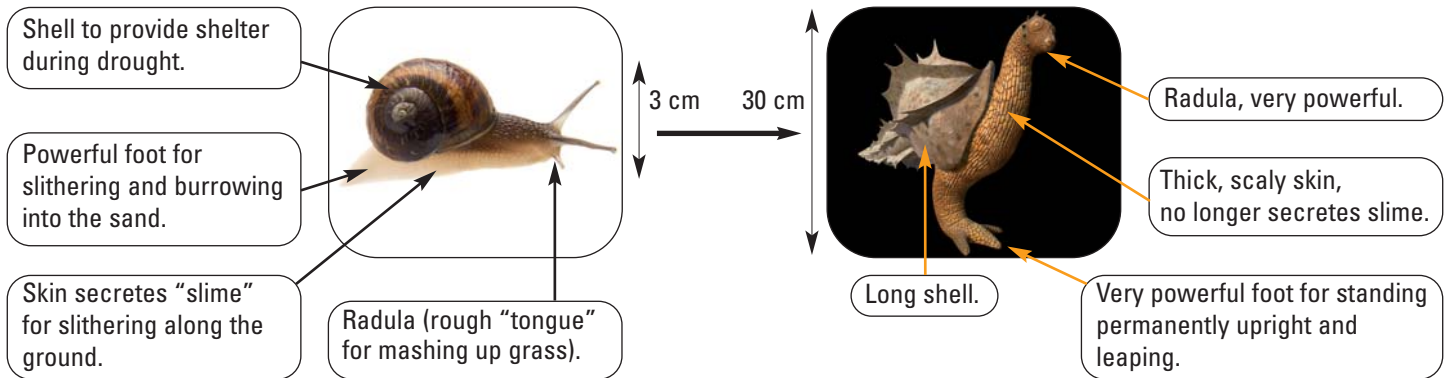


1. Modelling the *desert hopper* from the modern-day snail:



a. How long will it take for the modern-day snail to evolve into a *desert hopper*?

b. Where does the *desert hopper* live?

c. What are living conditions like in the *desert hopper's* habitat (circle the correct answers):

- Air temperature (day): *high - normal - low*
- Ground temperature (day): *high - normal - low*
- Sources of water: *available – not available*
- Damp shelter spots: *available – not available*
- Type of food available: *soft grass - scrub*
- Amount of food available: *little - lots*

d. Do *desert hoppers* have the same living conditions as snails?

e. Why do scientists think that the *desert hopper* would have such a powerful radula?

f. Why do scientists think that the *desert hopper* would have thick, scaly skin?

g. Why do scientists think that the *desert hopper* would stand upright?

- Reason no. 1:
- Reason no. 2:

h. Why do scientists think that the *desert hopper* would not secrete "slime"?

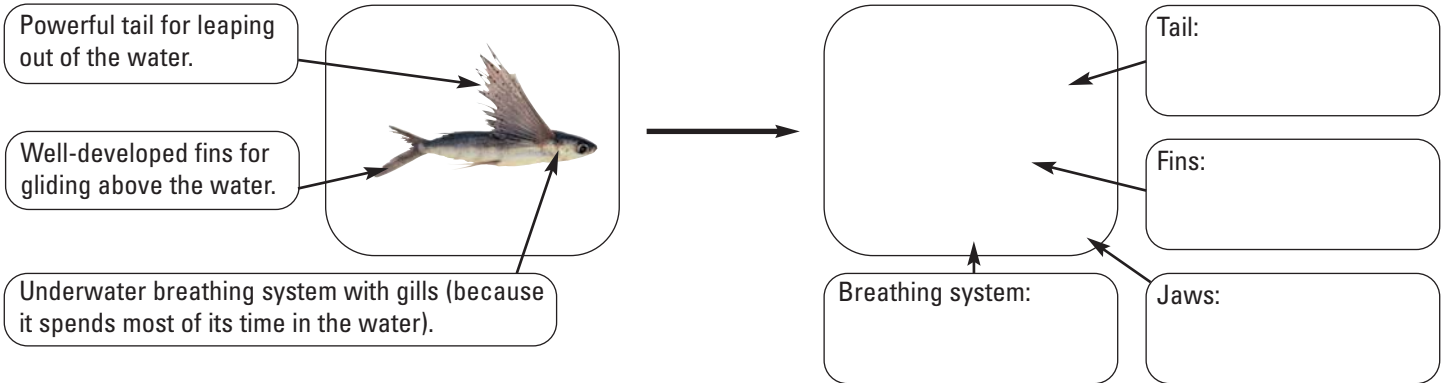
- Reason no. 1:
- Reason no. 2:

i. Why do scientists think that the *desert hopper* would have a long shell?

- Reason no. 1:
- Reason no. 2:

j. Why do scientists think that the *desert hopper* would be so big?

2. Modelling a new sea animal living 200 million years in the future from a modern-day flying fish:



a. What are living conditions like in this ocean?

.....

b. Are there many animals that can be eaten in this ocean? Give examples.

.....

c. Are there many predators in this ocean? Give examples

.....

d. Are there many predators in the sky? What are the reasons?

.....

e. From the answers you have given above, where is the best place for our animal to spend its time?

.....

f. From the answers you have given above, where is the best place for our animal to find food?

.....

g. What needs to be changed compared to the flying fish? Give reasons for your answers.

• Tail:

• Fins:

• Jaws:

• Breathing:

h. Which animal from the exhibition do you think it is?

.....

Exercise 1:

Which items are vital for an augmented reality kit?

1) _____

2) _____

3) _____

Which item detects the person's movement?

Which tool detects the person's position?

Exercise 2:

Draw a line to match the explanations to the keywords.

OVERLAYING

FINAL
TRANSMISSION

BACKGROUND SHOT

BOARDING

The filmed sequence and the added creatures are immediately transmitted back on to the binocular viewing screens, giving visitors the vivid impression that they are watching real-life action.

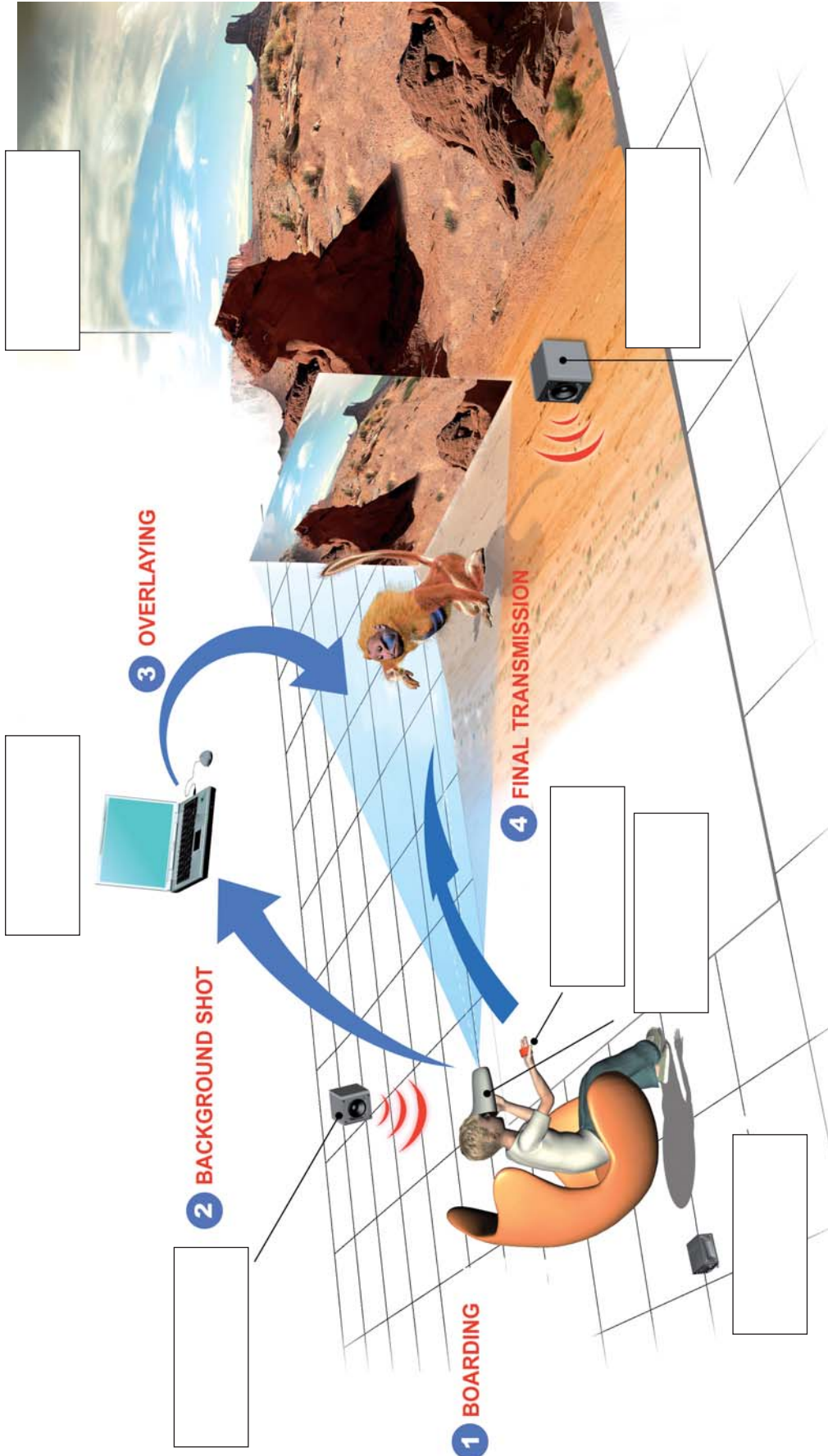
The explorers board the expedition vehicle, kitted out with their augmented-reality binoculars and sensor bracelets that let them handle virtual 3D objects within a real environment.

The computer adds the virtual 3D animals to the film in real time.

The binoculars' built-in camera films the scenery in front of the visitors and sends the shot to the computer.

Exercise 3:

Put the text stickers below in their correct position on the *augmented reality* illustration.



LOUD SPEAKERS

REAL BACKGROUND

POSITION-SENSING SYSTEM

BACKGROUND NOISES

MOTION-TRACKING BRACELET

AUGMENTED REALITY IMMERSIVE BINOCULARS

COMPUTER AND D'FUSION SOFTWARE FOR PC

